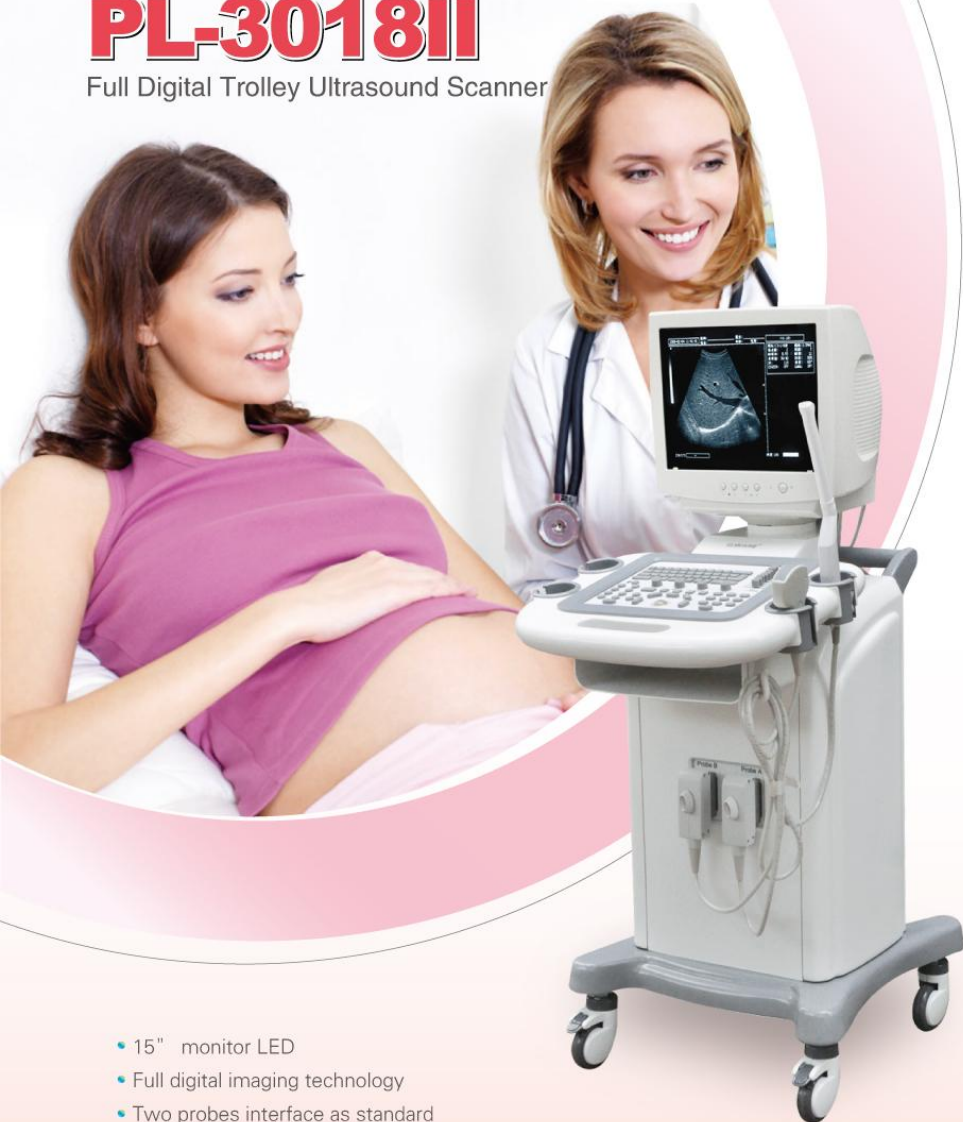


PL-3018II

Full Digital Trolley Ultrasound Scanner



- 15" monitor LED
- Full digital imaging technology
- Two probes interface as standard
- Scan depth: 40mm–240mm
- 809 frame cine loop & 32 images storage
- Video output : PAL–D, VGA



PL-3018II

Full Digital Trolley Ultrasound Scanner

Create the health with science and technology

Features:

- The system uses micro computer technology, Digital Scanning Converter (DSC), variable aperture, multi-section dynamic focusing, high dynamic, low noise, wide band pre-amplifier, log compression, TGC control, dynamic filtering, edge enhancement and frame correlation.
 - Those embedded components allow a clear, stable and high resolution image.
- Power Supply: 100V–130V/220V–240V, 50/60Hz



convex probe



linear probe



trans–vaginal probe

Standard configurations:

- Main unit
- 3.5Mhz convex probe
- All accessories

Optional:

- 6.5Mhz trans–vaginal probe
- 7.5Mhz linear probe
- Thermal video printer

Specifications:

| Probe | Standard | | Optional | |
|------------------------------|--|-------------------------------------|--------------------------------------|---------------|
| | C3-1/60R/3.5MHz convex probe | L3-1/7.5MHz linear probe | EC1-1/13R/6.5MHz trans-vaginal probe | |
| Probe frequency | 2.5Mhz, 3.5Mhz, 5.0Mhz | 6.5Mhz, 7.5Mhz, 8.5Mhz | 5.5Mhz, 6.5Mhz, 7.5Mhz | |
| Display depth (mm) | 240 (max), 16 levels adjustable | | | |
| Max detect depth (mm) | ≥160 | ≥80 | ≥60 | |
| Resolution (mm) | Lateral | ≤2 (depths80) ≤3 (80<-depths130) | ≤1 (depths60) | ≤1 (depths40) |
| | Axial | ≤2 (depths80) ≤3 (80<-depths130) | ≤1 (depths60) | ≤1 (depths40) |
| Blind zone (mm) | ≤5 | | ≤3 | ≤7 |
| Geometric position precision | Horizontal | ≤15 | ≤5 | ≤10 |
| | Vertical | ≤10 | ≤5 | ≤5 |
| Monitor size | 14 inch | | | |
| Display mode | B, B+B, B+M, M, 4B | | | |
| Image gray scale | 256 level | | | |
| Cine loop | 809 frame (Max) | | | |
| Image storage | 32 frames | | | |
| Scan angle | Adjustable | | | |
| Scan depth | 40mm-240mm | | | |
| Acoustic power | 2 steps | | | |
| Dynamic range | 100dB-130dB | | | |
| Image flip | Up/down, left/right, black/white | | | |
| Focus position | Adjustable | | | |
| Focal space | 5 level | | | |
| Measurement | Distance, circumference, area, volume, heart rate, GA, FW, EDD and etc. | | | |
| Notation | Date, time, name, sex, age, doctor, hospital name, Full screen words edit. | | | |
| Output report | 2 types | | | |
| Posture mark | ≥40 | | | |
| Video output | PAL-D, VGA | | | |

Xuzhou Palmry Electronics Co., Ltd



ADD.: No.4 Building, Zhongkai City Light, West Huaihai Road, Xuzhou City, Jiangsu Province, China (221008)
 TEL.: 86-516-80221766 / 83892858 FAX: 86-516-83892808 / 83892898
 BUSINESS: ultrasoundscanner@palmry.cn SERVICE: paierdianzi@palmry.cn
 www.palmryultrasound.com