



PL-6018P Portable Color Doppler

Technical Parameters:

- Monitor : 12.1" high-resolution LCD
- Image mode: B, BB, 4B, B+M , M, PWD, PwrD, CD, CWD, DirPwr, B+C+D.
- Keyboard: digital back-light control and spin button.
- Input / Output Interface : USB2.0 , LAN , VGA , RS232 , Video, DICOM3.0
- Gray scale : 256
- Scanning lines : ≥ 256
- Dynamic Range : 30dB-75dB
- Maximum frame rate : $\geq 65/s$
- Pseudo-color display : 11
- Note: body mark and character note, body mark: ≥ 100
- Cine loop : ≥ 100 frame
- Image memory : $\geq 160G$, format BMP/JPG/DCM/TIF
- TGC : ≥ 8
- Partial enlarged : ≥ 4 times
- Image processing : 8 frame-related, 6 related to six-speed lines

- Image flip : up and down , left and right , image rotation (2B, 4B mode rotated 90°) , black and white
- Sampling frame size, position and color : support B / color consistent width adjustable
- Pulse repetition frequency : 0.5-2kHz , 6 adjustable
- Gain : 20dB-48dB , grading adjustable
- Wall filter : 40-500 adjustable
- Noise Reduction : 32 adjustable
- Sample volume : 0.5-10mm adjustable range 20
- Scan speed : 8 adjustable
- Support synchronous updates automatically trace and spectral inversion
- Baseline position, spectrum volume and correction angle : adjustable
- Blood flow measurement velocity:
 - a) Maximum blood flow velocity measurement : pulse doppler $> 2m/s$
 - b) Lowest measured blood flow velocity : $< 2mm / s$ (non-noise signals)

Measurement:

- Mode B (2D) measurement
- a) General measurement: distance, perimeter, area, volume, distance narrower radio, area stenosis ratio.
- b) Gynecological measurement: uterine size and volume, cervix size and volume, right/left ovary size and volume, endometrial thickness, right/left follicle volume.
- M mode measurements: distance, heart rate.
- Doppler measurements: General measurement: systolic and end-diastolic velocity, peak flow, time, blood flow, pulse index and heart rate.

Standard Configuration :

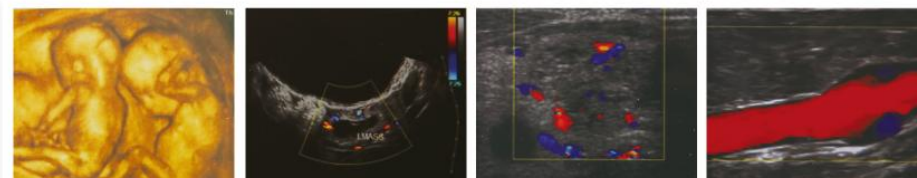
- Scanner Body : 1pc
- 3.5Mhz Convex Probe : 1pc
- Charger with a Set of Wires : 1set
- Bottle of USG gel : 1pc
- User Manual : 1pc

Optionals :

- Micro-convex probe
- Phased array probe
- Trans-irginal probe
- Linear probe
- 3D software
- Printer
- Puncture frame



High-quality clinical images:

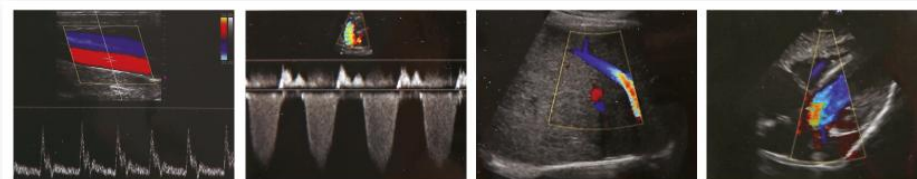


3D imaging twins

Transvaginal color doppler

Thyroid color doppler

Venous distension reflux



Real-time three simultaneous

Reflux spectral doppler

Abdominal color doppler

Cardiac color doppler

Xuzhou Palmary Electronics Co., Ltd



ADD.: No.4 Building, Zhongkai City Light, West Huaihai Road, Xuzhou City, Jiangsu Province, China (221008)
 TEL.: 86-516-80221766 / 83892858 FAX: 86-516-83892808 / 83892898
 BUSINESS: ultrasoundscanner@palmary.cn SERVICE: palmerdianzi@palmary.cn
 www.palmaryultrasound.com