

PL-6018T

Trolley Color Doppler



Technical Parameters:

- Monitor : 19" high-resolution LCD color monitor
- Gray scale : 256
- Scanning lines : ≥ 256
- Dynamic Range : 30dB-75dB
- Maximum frame rate : $\geq 65/s$
- Pseudo-color display : 11
- Note: body mark and character note, body mark : ≥ 100
- Cine loop : ≥ 100 frame
- Image memory : $\geq 160G$, format BMP/JPG/DCM/TIF
- TGC : ≥ 8
- Partial enlarged : ≥ 4 times
- Image mode: B, BB, 4B, B+M, M, PWD, PwrD, CD, CWD, DirPwr, B+C+D.
- Image processing : 8 frame-related, 6 related to six-speed lines
- Image flip : up and down, left and right, image rotation (2B, 4B mode rotated 90°), black and white
- DICOM3.0 interface with network remote assistance software
- Sampling frame size, position and color : support B / color consistent width adjustable
- Pulse repetition frequency : 0.5-2kHz, 6 adjustable
- Gain : 20dB-48dB, grading adjustable
- Wall filter : 40-500 adjustable
- Noise Reduction : 32 adjustable
- Sample volume : 0.5-10mm adjustable range 20
- Scan speed : 8 adjustable
- Support synchronous updates automatically trace and spectral inversion
- Baseline position, spectrum volume and correction angle : adjustable
- Blood flow measurement velocity:
 - a) Maximum blood flow velocity measurement : pulse doppler $> 2m/s$
 - b) Lowest measured blood flow velocity : $< 2mm/s$ (non-noise signals)
- Port and holder: 4 activated probe ports and holders, 1 Gel heater holder.
- Input / Output Interface : USB2.0, LAN, VGA, RS232, Video, DICOM3.0, foot switch, XGA, DVD burner



Measurement:

- Mode B (2D) measurement
- a) General measurement: distance, perimeter, area, volume, distance narrower radio, area stenosis ratio.
- b) Gynecological measurement: uterine size and volume, cervix size and volume, right/left ovary size and volume, endometrial thickness, right/left follicle volume.
- M mode measurements: distance, heart rate.
- Doppler measurements: General measurement: systolic and end-diastolic velocity, peak flow, time, blood flow, pulse index and heart rate.



Standard Configuration:

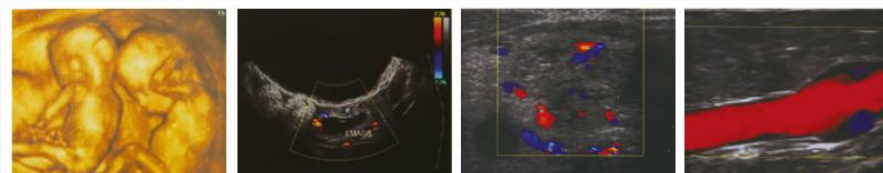
- Scanner Body: 1pc
- 3.5Mhz Convex Probe: 1pc
- Charger with a Set of Wires: 1set
- Bottle of USG gel: 1pc
- User Manual: 1pc
- USB disk: 1pc

Optionals:

- Micro-convex probe
- Phased array probe
- Trans-virginal probe
- Linear probe
- 4D Volume probe
- Printer
- Guided probe holder



High-quality clinical images:

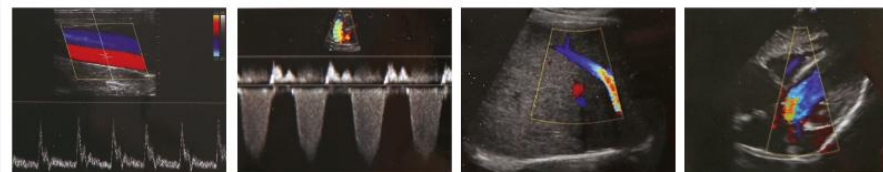


3D imaging twins

Transvaginal color doppler

Thyroid color doppler

Venous distension reflux



Real-time three simultaneous

Reflux spectral doppler

Abdominal color doppler

Cardiac color doppler

Xuzhou Palmay Electronics Co., Ltd



ADD.: No.4 Building, Zhongkai City Light, West Hualhai Road, Xuzhou City, Jiangsu Province, China (221008)
TEL.: 86-516-80221766 / 83892858 FAX: 86-516-83892808 / 83892898
BUSINESS: ultrasoundscanner@palmay.cn SERVICE: paierdianzi@palmay.cn
www.palmayultrasound.com